



# IN FOCUS

Newsletter of the Northside Creative Photography Club

Newsletter  
July 2009



Photo: Spit Bridge to Manly, Susan Buchanan.

## IN THIS ISSUE

From the President	1
Contacts & News	2
Workshop	3
Articles	4/5/6
Comps / Exhibitions	7

### FROM THE PRESIDENT

In a few weeks time, I have been asked to present to Session 4 participants in the FCC workshop series. This workshop deals with achieving your photographic goals and evaluating your development as a photographer.

The question that has been put to me is: what are the various methods, options, features, of Northside that have contributed to individual growth? Well rather than come up with a sanitized version of what I believe that we do, I would like to turn the answer over to you, our members. What are we doing for you to promote your growth as a photographer?

Here is my list:

- Mentoring
- Portfolio
- Presenters
- Social interaction
- Outings

But this list is lifeless – I need to humanize it. I need your help. Please contact me if you have something to say about your growth as a photographer and how NCP has contributed to that.

Asking this question also opens the debate for the other side as well: What aren't we doing?

Good luck in the upcoming competition.

**Susan Buchanan**

President, Northside Creative Photography

Quote: Quality doesn't mean deep blacks and whatever tonal range. That's not quality, that's a kind of quality. The pictures of Robert Frank might strike someone as being sloppy--the tone range isn't right and things like that--but they're far superior to the pictures of Ansel Adams with regard to quality, because the quality of Ansel Adams, if I may say so, is essentially the quality of a postcard. But the quality of Robert Frank is a quality that has something to do with what he's doing, what his mind is. It's not balancing out the sky to the sand and so forth. It's got to do with intention. - Elliott Erwitt



## CONTACTS

**POST:**  
PO Box 192, Gordon, NSW 2072, Australia

**WEB:**  
[www.ncp.org.au](http://www.ncp.org.au)

**EMAIL:**  
Contact via email is available from the  
'Contact Details' page on our Website.

**THE CLUB MEETS AT:**  
St David's Uniting Church Hall,  
Pacific Highway,  
Lindfield.  
(Corner Provincial Road.)  
On the 1st and 3rd Wednesday  
of each month at 7.30 for an 8pm start.

**PRESIDENT:**  
Susan Buchanan: 0428 446 495  
**VICE PRESIDENT:**  
Jan Glover: 02 9498 3916  
**SECRETARY:**  
Peter Sambell  
**TREASURER:**  
Richard Warburton  
**COMMITTEE:**  
Chris Barlow  
John Huggett  
Michael Miller  
Carolyn Pettigrew  
**PUBLICITY:**  
Carolyn Pettigrew: 02 4970 5083  
**WEBMASTER:**  
Chris Barlow: 02 9487 3646

## **JULY OUTING: JERUSALEM BAY TRACK, SUNDAY 19TH**

Meeting at Hornsby station at 10AM to catch the 10:20 train to Cowan (arriving 10:34) members should be prepared for a 5Km return trip to Jerusalem Bay. The walk covers a small section of the Great North Walk and involves a steep descent (which turns into an ascent on the way back!), creek crossing (via bridge) the ruins of the Rhodes boatshed and beautiful outlooks and scenery. The walk is short in length but may be taxing in difficulty. Make sure that you have your lunch (to be consumed in the scenic surrounds of Jerusalem Bay) and sufficient water. Please RSVP to Susan in the usual way.

## **PETER EASTWAY AT MOSMAN CAMERA CLUB**

The Mosman Camera Club wishes to invite the members of Northside Creative to attend "An Evening With Peter Eastway" on Friday July 3rd at 8.00pm in the Mosman RSL Club. Peter has prepared a special presentation whereby he will be speaking about his work over the years, and will then show us his latest creations and the methods used in order to obtain these outstanding images.

## **PORTRAIT WORKSHOP EXHIBITION - "JOSH"**

Those who participated in the portrait workshop on 13th June are asked to bring up to three prints (featuring our model Josh) to exhibit at the meeting of 15th July. The intention is not for this to be a competition, but rather an opportunity to see how a subject may be interpreted in many different ways.

## **WEEKEND AWAY - FRIDAY 18 TO SUNDAY 20 SEPT 2009**

For our second weekend away for members the Club is planning a weekend in luxury cabins in the One Mile Beach area of Port Stephens. The cabins are self catering and there are excellent eateries nearby.

Port Stephens offers a wide variety of photo opportunities including ocean and bay beaches, sand dunes, whale watching, Tomaree Head and Fingal Bay with the sandspit and (tides and weather permitting) the chance to explore Point Stephens and the ruins of the old lighthouse settlement. We need expressions of interest before the second meeting in July as we need to book accommodation in this very popular area. The cabins each have two bedrooms with shared bathroom facilities and plenty of space for us to get together to plan outings and socialise. Please contact Kay Hill ([kayhill22@hotmail.com](mailto:kayhill22@hotmail.com)) to confirm you are coming and also advise if you need transport. We always have a wonderful time and it is a further opportunity to socialise with fellow camera enthusiasts and to learn from each other."

## **FCC TOPSHOT AWARDS PRESENTATION**

Saturday 4th July 12.30pm Castle Hill RSL Club (please note revised starting time, previously advertised as 1pm.)

The program includes the presentation of awards, a short audiovisual of the awarded digital entries and prints, and a large display of prints. The keynote speaker is Ken Duncan, OAM, FIAPP, Australia's premier panoramic landscape photographer. Congratulations to Jan Glover (Topshot winner) and also to Kerry Boytell, Carol Makeham and Chris Barlow, who won awards in the competition.

## **NEWSLETTER SUBMISSIONS:**

We invite you to contribute to InFocus. If you have images you would like to see appear or a story with or without accompanying images, we would like to hear from you.

To ensure our newsletter goes out on time, please have any submissions emailed to Jan Glover at [editor@ncp.org.au](mailto:editor@ncp.org.au)

**MATERIAL DEADLINE: 31st July 2009 or prior.**

# Workshop 13th June - Steve Wiessner

On Saturday 13th June, 28 keen members attended a workshop run by one of our members, Steve Wiessner. The topic was the creative ways to use light, both natural light as well as off camera flash.

From 9am till 3pm, the day comprised of talks by Steve, demonstrations by Steve and opportunities for everyone to do it for themselves either using some of Steve's equipment or their own.

Susan had arranged a model for the day and Josh was very willing to try to do what was asked of him, sometimes by more than one person at a time – we had him jumping off walls, climbing trees, reading a 'play school' book and sitting in a rocking chair with a shawl around his knees – how agreeable is that for a chap in his early 20's?

The day went very fast and many others said on the day how beneficial it was to participate in such a practical workshop. We not only learnt from Steve about using light and flash for portraits but also from chatting to other members and comparing notes on our cameras and accessories.

NCP has a good attitude of helping their members and not always wanting to 'compete' and 'win' awards and I believe this workshop demonstrated this so well. Steve was only too happy to share his experience and knowledge.

Steve was assisted on the day by Chris looking after all the technical aspects and Susan and Jacques for keeping the water hot and providing the morning & afternoon tea.

These type of sessions take quite a bit of organising but it was a major success. Well done again Steve and lets hope the club can hold further sessions.



Photos: Susan, Mike, Jan, Peter.

## June Outing: Manly to the Spit Bridge.

There was no chance that we would get lost on this day as Wal Lamberth came equipped with a GPS locator and was able to pinpoint our location with enviable precision. We traversed 11K passing many photographic opportunities. The very beginning of the walk was graced with great light and reflecting yachts. The large-scale photography gave way to nature (Blue Heron), macro (lichen and native flowers), textures (rock platforms, bark), abstracts and even the occasional portrait. It was indeed a full day, as we did not reach Manly until 4PM but well worth it. I would recommend this walk, especially in threatening weather - the sky scapes were fantastic.

**Susan Buchanan**



## David Malin Presentation 15th July.

Galileo's Legacy. Prof. David Malin

Anglo-Australian Observatory and RMIT University

Galileo is famous for being among the first to use a telescope to explore the night sky, in 1609. However his fame was spread by the rapid publication of his discoveries and his use of drawings to explain them. He was the first to publish images of things that had never been seen before. It was to be another 40 years before human vision was extended by the microscope to an equally invisible universe, and again pictures were important. David will briefly describe and illustrate the importance of these discoveries and their reliance on fundamental enabling technologies. One of them, photography, revolutionised astronomy, microscopy and much else at the end of the 19th century.

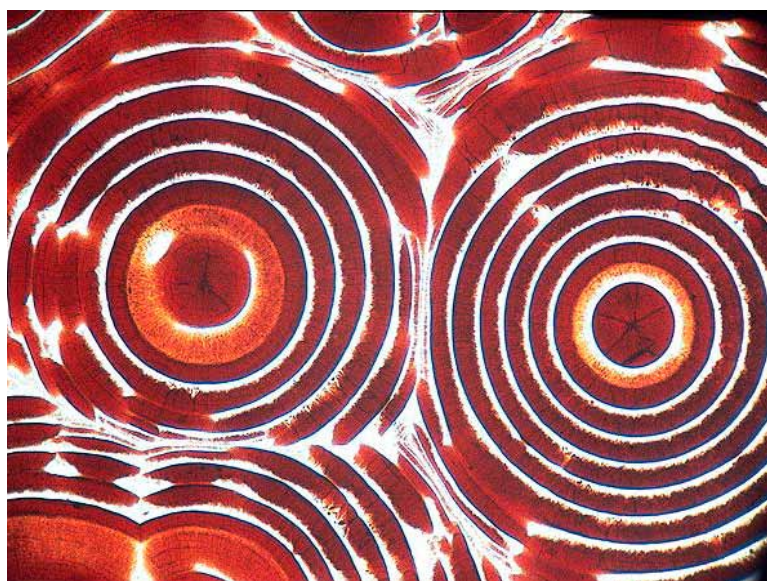


Photo copyright David Malin.

# Lake Eyre 2009

Lake Eyre filling with water is one of those events that fire the imagination. Visions of hundreds of birds, a salt crystal encrusted shoreline glistening in the sun etc. Well the reality isn't quite like that unless you own a helicopter and can get into some pretty remote locations but my trip to Lake Eyre was enjoyable all the same. I had never been to that part of South Australia before so the landscape was quite unfamiliar. North of Gowyer's line, the historic rainfall line north of which the land was said to be unsuitable for cropping, the country is largely saltbush desert, gibber plains and sinuous dunes.

The recent rains have brought a flush of new growth to this area and this was most evident at Kalamurina Wildlife Sanctuary (<http://www.australianwildlife.org>). Here we were the first people to be able to walk along an anabranch of Warburton River after it had flooded and the water retreated. The myriad of animal tracks of the crawling, jumping, hopping, running kind was wonderful to see.

We only saw a few flocks of pelicans from 500ft but quite a lot of other birds including broilgas had gathered at a permanent waterhole at Mungerannie. Alas my telephoto lens was out of action.

This was a pretty rushed five day bus trip. Nonetheless, the flight over Lake Eyre, albeit in an old Cessna with scratched stained windows making good shots impossible, was worth the effort. This is a journey to make by car at a more leisurely pace taking advantage of the interesting towns that once served the grazing and farming industries. There is ample opportunity for some great landscapes and the many abandoned railway stations of the old Ghan rail route add historic interest. Throw in some fabulous old pubs and great food at the Parachilna Prairie Hotel for some interior work and then combine that with the Flinders Ranges where beautiful little yellow footed rock wallabies were hopping about like rabbits and there is just about everything to fill a keen photographers day.

**Carolyn Pettigrew**



Photos copyright Carolyn Pettigrew.

## COMPETITION RULES UPDATE

Members should note that Section 4 – Electronic Digital Image (EDI) of the 2009 Competition Rules has been clarified.

This is found at: <http://www.ncp.org.au/comp.htm>

“Entries must be received at the nominated email address by 8.00 p.m. the day before the competition. Late emailed entries will not be accepted. Only members who do not have email may submit entries on the meeting night (CD or flash drive);”

This change clarifies the cut off for receipt of entries by email and replaces an ambiguous statement. Essentially the competition organiser will not check for entries in the mailbox after 8.00 p.m. the Tuesday before the competition.

At present there is a flurry of last minute and late entries and it is hoped that the changed rule will encourage members to send in their entries earlier. The competition program for the whole year has been published providing members with the opportunity to work ahead.

The risks of sending in entries close to the dead line are numerous. While the delivery of email is usually quick delays can occur and these are the responsibility of the member.

The competition organiser sends an acknowledgement of received entries to allow members to follow up missing entries. If the entries are sent close to the dead line this opportunity is lost.

The competition organiser also checks the entries for compliance and may at his discretion take up any issues with the member. Again if the entries are sent close to the dead line then this opportunity is lost. Note it is recommended that members who are new to the EDI competitions place an alert message in the body of the email.

Early entries also have the advantage of smoothing out the workload of the competition organiser.

Note that to avoid spam the competition email address is not advertised on the Website. If it is forgotten it may be found in the footer of all emails from NCP. In summary, work ahead and get those EDI entries in early.

## NIKONS AND ICONS

Our presenter on 17th June was Mark Tedeschi, Crown Prosecutor and accomplished and exhibited photographer. His subject was Nikons and Icons – Nikons because he uses one (D700) and icons because he tries in all his shots to convey a universal message. He began to photograph seriously in 1988, he joined Lane Cove Camera Club, and enjoyed printing black and white.

His work covers a broad spectrum:

- \* Femininity & other Feelings: 60 monochrome images of human emotions and states of being taken in Italy (sponsored by Epson Australia and supported by the Italian Embassy and the Italian Institute of Culture)

- \* Mimi figures: abstract landscapes from the NSW mid-north coast

- \* Court in the Act: Court interiors, court staff and legal personalities, giving an insight into the cloistered world of the criminal justice system, particularly around Darlinghurst Courthouse

- \* Legal Chameleons: portraits of 20 prominent NSW barristers pursuing their own private interests and activities in their robes (sponsored by Thomson Reuters)

- \* Blue Labyrinth: abstract landscapes from the Blue Mountains of NSW

- \* Eveleigh Street & environs: images of the indigenous residents and buildings of “The Block” in and around Eveleigh Street, Redfern

- \* Courage to care: portraiture of 40 Australian Holocaust survivors and the people who saved them

- \* Still Life, No Fruit: Images of industrial abandonment and decay.

Mark was an entertaining speaker, and his love of words was evident. Why can't I think of phrases such as “serendipitous synchronicity” (to describe the relationship between elements in an image) or come up with an image titled “Dance of Marital Space”.

If you missed the presentation or would like to see his images again, visit his website: [www.marktedeschi.com](http://www.marktedeschi.com)



Photos copyright Mark Tedeschi.

# Exhibitions and Competitions

## **BLENDER GALLERY**

### **LOMO LCA 25TH ANNIVERSARY**

**2-14 July, 16 Elizabeth St Paddington.**

**Tues-Sat 10am-6pm**

An exhibition and installation celebrating 25 years of the Lomography LCA Camera

## **MEYER GALLERY**

### **19TH CENTURY AUSTRALIAN PHOTOGRAPHY**

**16 July – 2nd August**

**269 Bourke St Darlinghurst.**

**Thurs – Sat 11am – 6pm, Sun 12-4**

## **CHARLES HEWITT GALLERY**

### **TAMARA DEAN – RITUALISM SERIES.**

**June 25 – July 14.**

**335 South Dowling St, Darlinghurst.**

In this series of striking images, Tamara Dean explores how rituals help us make sense of our mortality.

[www.charleshewitt.com.au](http://www.charleshewitt.com.au)

## **BALLARAT FOTO BIENNALE**

**September 4 to October 4 2009**

The Ballarat International Foto Biennale evolved from the Daylesford Foto Biennale, which, after two highly successful festivals in 2005 and 2007 has outgrown the capacity of Daylesford to continue our exponential growth as Australia's most vibrant, exciting and engaging photographic event. The move to Ballarat affords us the ability to expand the breadth and quality of our Core Exhibition program, and makes available a host of new venues into which to expand the already impressive Fringe Exhibition program, In the space of just two festivals, the Board and organising committees have taken the Biennale to international event standard and status. BIFB 2009 will bring an expected audience of in excess of 40,000 from metro and regional Victoria, interstate and overseas. Exhibitions will be spread over 7 venues. For more information visit the website [www.ballaratfoto.org](http://www.ballaratfoto.org)

## **INTERCLUB**

**TUESDAY 7TH JULY 8PM.**

Interclub competition with Northside Creative Photography, Lane Cove and North Sydney Leagues Camera Clubs at North Sydney Leagues. All members are invited.

## **FCC Topshot Awards Presentation**

**Saturday 4th July. 12.30pm Castle Hill RSL Club**

## **PEREGRINE ADVENTURES**

### **PHOTOGRAPHY COMPETITION**

More than \$35,000 worth of prizes are up for grabs in the 2009 Images of the World photographic competition, brought to you by Peregrine Adventures, Australian Geographic, Nikon and Gore-Tex.

For categories, terms and conditions, visit:

[www.peregrineadventures.com/imagesoftheworld](http://www.peregrineadventures.com/imagesoftheworld)

## **Intrepid Travel Photography Competition**

<http://www.intrepidtravel.com/inspirations/win/photocomps/>

Travellers from all over the world are invited to send in their best travel snaps in digital form. You don't have to be a pro. You just have to have a keen eye and a great travel spirit.

The competition closes on 30 June each year. Entries received after this date are entered into the following year's competition. All winners are announced in their weekly email newsletter, Intrepid Express and are notified directly.

## **St Stephens Uniting Church Photography Competition**

This is an annual competition – the theme this year is "All are Precious in His Sight". The competition has three sections – Senior Amateur, Junior Amateur and People's Choice. Each winner will receive a prize of \$300.

Entries close September 11. Following judging the images will be exhibited at St Stephens Uniting Church, 197 Macquarie St, Sydney, from October 8 to 18.

For entry forms and competition rules phone 9221 1688 or email [office@ssms.org.au](mailto:office@ssms.org.au)

## **2009 TPOTY Competition**

Entries are now open for the 2009 international Travel Photographer of the Year competition.

Prizes include trips and equipment.

Entries close September 22nd. For more information go to [www.tpoty.com](http://www.tpoty.com)

## **australian centre for photography**

**257 Oxford Street, Paddington NSW 2021**

Workshop Term 2 Student Exhibition

Wednesday 1 July 6.00pm to 8.00pm

Exhibitions open to the public from Thursday 2 July

Upcoming Events : July 2009

Wed 1st July : Competition: Open - Judge: Len Brown

Tue 7th July : Interclub with Lane Cove & North Sydney

Wed 15th July : Presentation: David Malin – Photo - Scientist "Galileo's Legacy"

Sun 24th July: Outing: Jerusalem Bay Track

